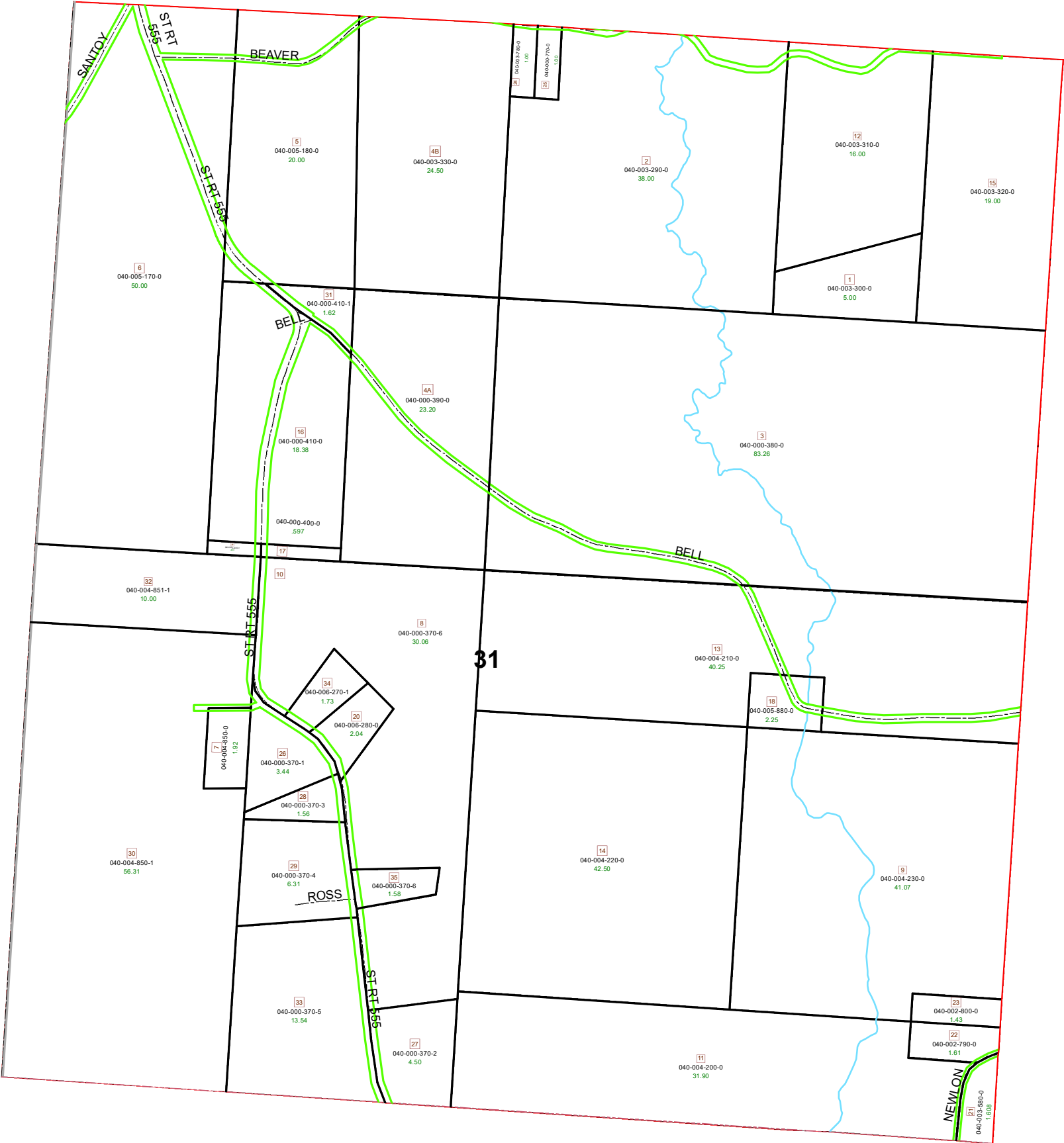


DEERFIELD TOWNSHIP SECTION 31 R13 TWP 9 MORGAN COUNTY, OH



PIN	VOL	PAGE	Owner	LegalDescr	Acres
040-005-880-0	D.V 187	739	BLACKHAWK LAND & RESOURCES LLC	R13 T09 S31 SD 18	2.25
040-004-850-1	OR221	499	BOWEN RANDY D JR	R13 T09 S31 SD 30	56.305
040-000-370-1	OR159	316	CHARLES JAMES D & BETTY C	R13 T09 S31 SD 26 S	3.438
040-003-780-0	D.V 206	734	DUNCAN TONIA D	R13 T09 S31 SD 24	1
040-000-370-3	OR210	323	HILL HEATHER M & DARRIN A	R13 T09 S31 SD 28 S	1.564
040-000-410-0	D.V 195	542	KANGAS DAVID A & SARA M	R13 T09 S31 SD 16 E	18.379
040-000-370-0	OR16	476	KANGAS DAVID A & SARA M	R13 T09 S31 SD 8-10	30.06
040-000-370-6	OR219	54	KANGAS DUSTIN D	R13 T09 S31 SD 35	1.58
040-004-851-1	OR230	1423	KANGAS DUSTIN D & AMANDA	R13 T09 S31 SD 32 S	10
040-000-400-1	OR232	1741	KANGAS DUSTIN D & AMANDA	BEING IN SD 36	0.403
040-000-370-5	OR202	368	LEROY WAYNE A	R13 T09 S31 SD 33	13.544
040-000-410-1	OR219	1432	LYTLE LESLIE	R13 T09 S31 SD 31 E	1.621
040-006-280-0	OR188	02	MAYNARD BILLY M	R13 T09 S31 SD 20	2.04
040-000-770-0	OR211	656	MCCOY DICKIE LEE	R13 T09 S31 SD 25	1
040-003-300-0	OR234	3842	MCCOY ORVILLE D	R13 T09 S31 SD 1	5
040-003-320-0	OR234	3842	MCCOY ORVILLE D	R13 T09 S31 SD 15	19
040-003-310-0	OR234	3842	MCCOY ORVILLE D	R13 T09 S31 SD 12	16
040-003-290-0	OR234	3842	MCCOY ORVILLE D	R13 T09 S31 SD 2	38
040-003-330-0	OR234	3842	MCCOY ORVILLE D	R13 T09 S31 SD 4	24.5
040-004-850-0	OR157	311	NEWMAN JEFFERY ALLEN & JEANIE C	R13 T09 S31 SD 7 EX	1.922
040-006-270-1	OR187	535	NOLEN BRADLEY & STEPHANIE	R13 T09 S31 SD 34	1.732
040-000-370-4	OR78	541	PIERCE JASON D & AMANDA L	R13 T09 S31 SD 29 S	6.31
040-005-180-0	D.V 182	257	SIGMAN VINCENT L & KIMBERLEY H	R13 T09 S31 SD 5	20
040-005-170-0	D.V 182	257	SIGMAN VINCENT L & KIMBERLEY H	R13 T09 S31 SD 6	50
040-003-580-0	OR233	4568	WISEMAN KENNY L TOD: CLINTON ERIC	R13 T09 S31 SD 21	1.608
040-000-370-2	OR130	707	WISEMAN RUSSELL E & DEE ANN	R13 T09 S31 SD 27 E	4.504
040-002-790-0	D.V 191	719	WISEMAN RUSSELL EUGENE & DEE ANN	R13 T09 S31 SD 22 S	1.61
040-002-800-0	D.V 191	719	WISEMAN RUSSELL EUGENE & DEE ANN	R13 T09 S31 SD 23 S	1.43
040-004-200-0	D.V 191	721	WISEMAN RUSSELL EUGENE & DEE ANN	R13 T09 S31 SD 11 E	31.9
040-004-230-0	D.V 191	721	WISEMAN RUSSELL EUGENE & DEE ANN	R13 T09 S31 SD 9 EX	41.07
040-004-220-0	D.V 191	721	WISEMAN RUSSELL EUGENE & DEE ANN	R13 T09 S31 SD 14 E	42.5
040-004-210-0	D.V 191	721	WISEMAN RUSSELL EUGENE & DEE ANN	R13 T09 S31 SD 13 S	40.25
040-000-400-0	OR234	2670	WISEMAN WILLIAM G	R13 T09 S31 SD 17 E	0.597
040-000-380-0	OR234	2670	WISEMAN WILLIAM G	R13 T09 S31 SD 3	83.26
040-000-390-0	OR234	2670	WISEMAN WILLIAM G	R13 T09 S31 SD 4	23.2

Boundaries

- - - - - Future Split	— Parcel
— Hydro	— ROW
- - - - - County	— Section
— Lot	- - - - - Township
- - - - - Roads	

